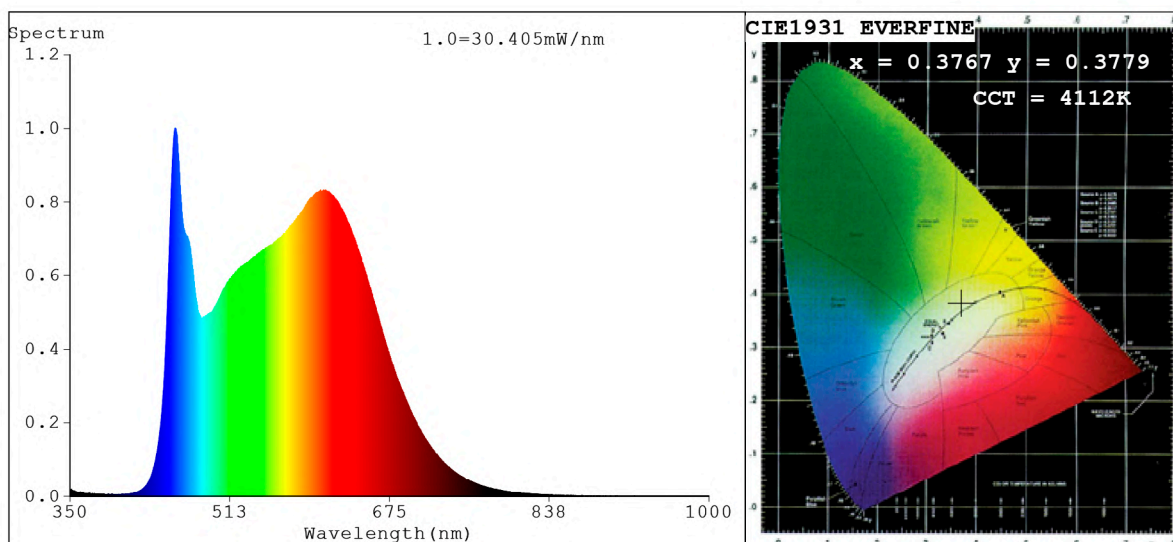


## Spectrum Test Report



### Color Parameters:

Chromaticity Coordinate:  $x=0.3767$   $y=0.3779$   $u'=0.2222$   $v'=0.5015$   
 CCT=4112K (Duv=0.0017) Dominant WL:  $\lambda_d = 577.7\text{nm}$  Purity=26.4%  
 Ratio: R=19.6% G=75.1% B=5.3%; Peak WL:  $\lambda_p = 457.1\text{nm}$  FWHM=31.8nm  
 Render Index: Ra=91.6 CRI=89.4 TM30: Rf=86 Rg=95  
 R1 =95 R2 =98 R3 =94 R4 =88 R5 =92 R6 =95 R7 =88  
 R8 =82 R9 =65 R10=97 R11=91 R12=71 R13=98 R14=97 R15=91

### Photo Parameters:

Flux = 1530 lm Eff. : 96.83 lm/W Fe = 5.177 W Scotopic: 2930.9 S/P: 1.9155

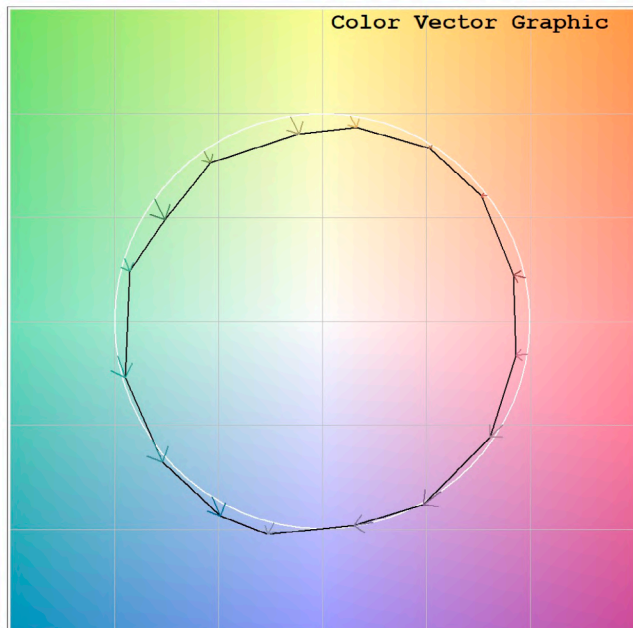
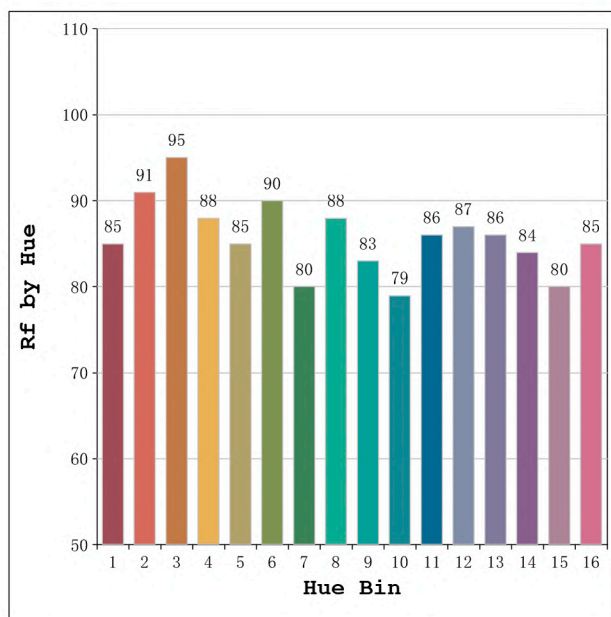
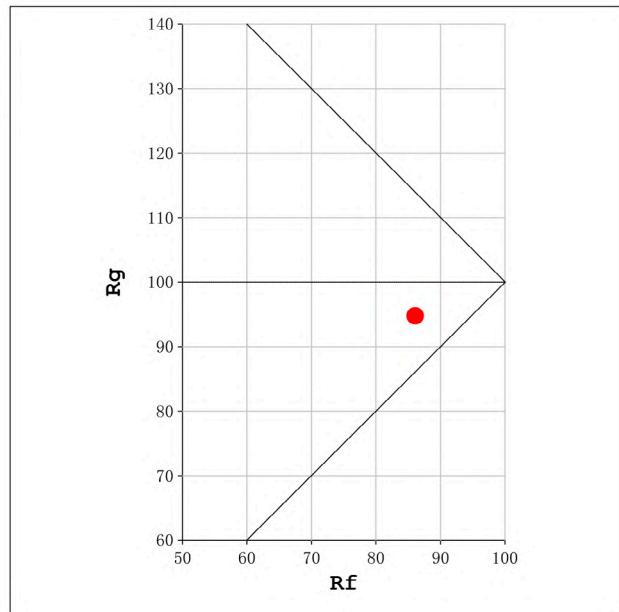
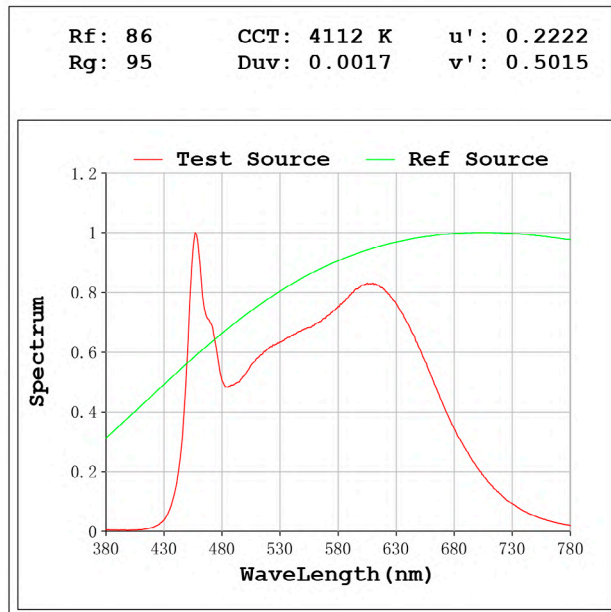
### Electrical parameters:

V = 23.998 V I = 0.6585 A P = 15.80 W PF = 1.000

Status: Integral T = 1000 ms Ip = 51031 (78%)

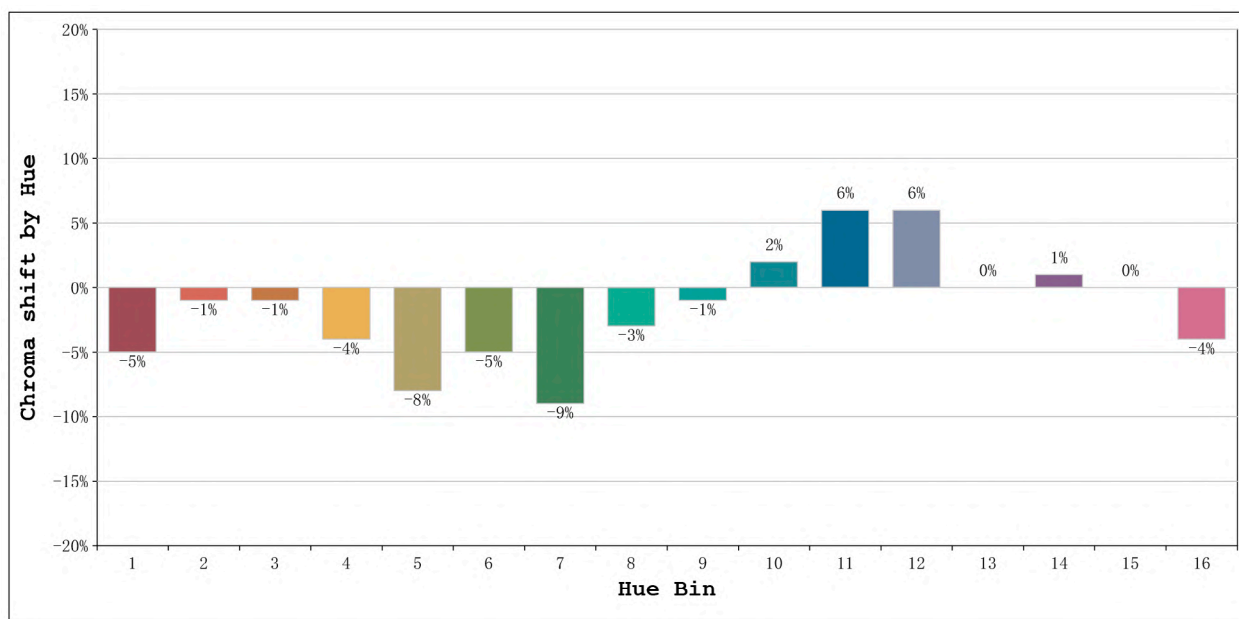
Model: Ecoled COB 4000K  
 Tester: Sergio Carneros  
 Temperature: 13Deg  
 Manufacturer: Luz Negra

Number: 31.002  
 Date: 25-5-2021  
 Humidity: 65%  
 Remarks: 100cm de tira flexible



Model:Ecoled COB 4000K  
 Tester:Sergio Carneros  
 Temperature:13Deg  
 Manufacturer:Luz Negra

Number:31.002  
 Date:25-5-2021  
 Humidity:65%  
 Remarks:100cm de tira flexible



Hue Bin	Hue Angle	Rf	Graphic shift(%)	
			Chroma	Hue
1	0.0° - 22.5°	85	-5	3
2	22.5° - 45.0°	91	-1	1
3	45.0° - 67.5°	95	-1	0
4	67.5° - 90.0°	88	-4	-3
5	90.0° - 112.5°	85	-8	-2
6	112.5° - 135.0°	90	-5	0
7	135.0° - 157.5°	80	-9	5
8	157.5° - 180.0°	88	-3	5
9	180.0° - 202.5°	83	-1	11
10	202.5° - 225.0°	79	2	12
11	225.0° - 247.5°	86	6	8
12	247.5° - 270.0°	87	6	-1
13	270.0° - 292.5°	86	0	-8
14	292.5° - 315.0°	84	1	-10
15	315.0° - 337.5°	80	0	-7
16	337.5° - 360.0°	85	-4	-1

Model:Ecoled COB 4000K  
 Tester:Sergio Carneros  
 Temperature:13Deg  
 Manufacturer:Luz Negra

Number:31.002  
 Date:25-5-2021  
 Humidity:65%  
 Remarks:100cm de tira flexible